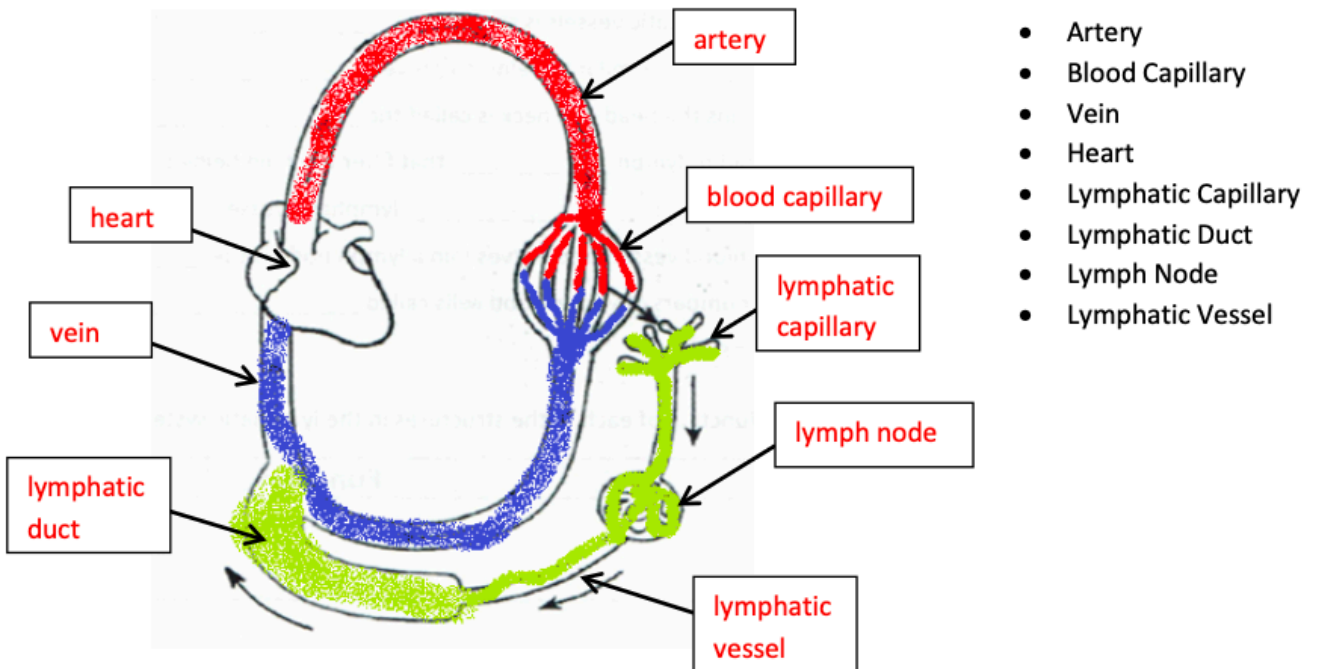


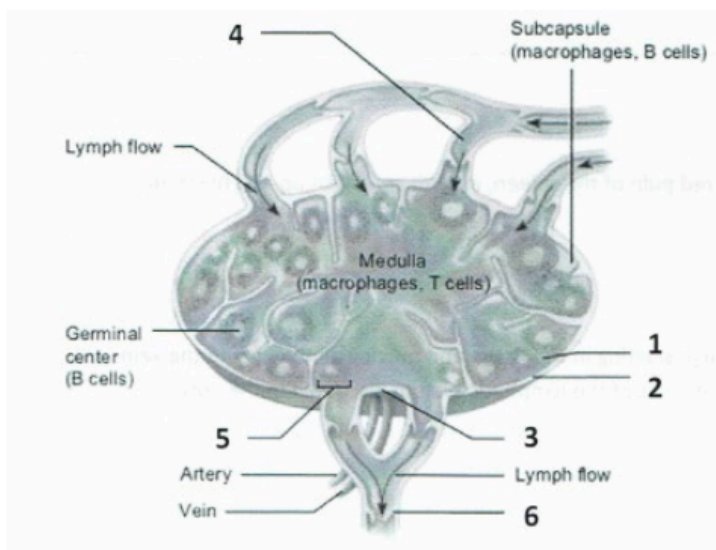
The Lymphatic System Worksheet (KEY)

Using the list to the right, label the parts of the lymphatic and circulatory system on the diagram below.



On the diagram above, color the following structures:

1. Color the arteries red
2. Color the veins blue
3. Color half the capillary bed red and the other half blue
4. Color the lymphatic capillaries, lymph node, lymphatic vessels, and lymph duct green



Label the diagram of lymph node by writing the correct numbers in the spaces provided:

- 4 Afferent lymphatic vessel
- 6 Efferent lymphatic vessel
- 2 Capsule
- 3 Hilum
- 5 Nodule
- 1 Sinus